



# HU-FRIEDY KEY OPINION LEADER

## THE ALLEN ORAL PLASTIC SURGERY KIT

This specialized surgical kit provides precision micro-instruments specifically designed for today's minimally invasive soft tissue grafting procedures. Surgical applications include soft tissue augmentation, root coverage, vestibular extension, stabilization of mobile marginal tissue, and ridge augmentation.



Dr. Allen is the former president of the American Academy of Esthetic Dentistry, the American Academy of Restorative Dentistry and the American Academy of Periodontology Foundation. He currently serves as the Periodontal Section Editor for the Journal of Esthetic Dentistry and serves on the Editorial Boards of the Journal of Periodontology and the International Journal of Periodontics and Restorative Dentistry.

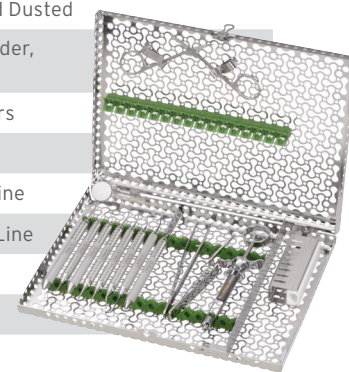
Dr. Allen received the Distinguished Alumnus Award from the Baylor College of Dentistry Periodontics Residency Program, the Master Clinician Award from the American Academy of Periodontology and the Best Teacher Award from the American Academy of Esthetic Dentistry. Dr. Allen is the Founder and Director of the Center for Advanced Dental Education in Dallas, Texas where he teaches surgical technique courses. He has published over 50 articles in the area of esthetic surgery and continues to present numerous lectures and surgical demonstrations worldwide.

## DR. EDWARD P. ALLEN, D.D.S., PH.D.

### ALLENKIT

### THE ALLEN ORAL PLASTIC SURGERY KIT INCLUDES:

| PART CODE     | DESCRIPTION                                                 |
|---------------|-------------------------------------------------------------|
| IMN4160       | 16 Instrument Infinity Series Cassette                      |
| SYRCW         | CW Aspirating Anesthetic Syringe                            |
| 10-130-05     | 5 Straight Round Scalpel Handle                             |
| PCP116        | CP-11 Color-Coded Probe                                     |
| MIR5/3        | 5 Front Surface Mouth Mirror                                |
| MH6 (2)       | 6 Mirror Handle                                             |
| KPAX          | Allen End-Cutting Intrасulcular Knife, Black Line           |
| K012KP3R49    | Allen Arrowhead Knife, Everedge®                            |
| K012KP03R9    | Modified Allen Orban Knife Round, Everedge                  |
| SYG7/89E2 (2) | 7/8 Younger-Good Curette, Everedge                          |
| SP20          | 20 Corn Suture Pliers                                       |
| 8-905DD       | Plain Straight Micro Tissue Pliers, Diamond Dusted          |
| NHM-5026R     | Micro Castroviejo Perma Sharp Needle Holder, Diamond Dusted |
| S5080         | Straight Goldman-Fox Perma Sharp Scissors                   |
| PPAELX        | Allen Periosteal Elevator, Black Line                       |
| PPAELAX       | Allen Periosteal Elevator, Anterior, Black Line             |
| PPAELPX       | Allen Periosteal Elevator, Posterior, Black Line            |
| MCUPE (1)     | Immunity Steel Cup, Modified                                |
| ALLENCARD     | Allen Membrane Measurement Card                             |



### RECOMMENDED KIT ADDITIONS (sold separately):

| PART CODE | DESCRIPTION                                                       |
|-----------|-------------------------------------------------------------------|
| PSN8384P  | 6-0 Blue Polypropylene, 18", C-17, 3/8 Circle Premium Reverse Cut |

How the best perform



# ORAL PLASTIC SURGERY & TUNNELING PROCEDURE



## GINGIVAL RECESSION

Instrument: CP-11 Color Coded Probe

Mandibular premolar with 3mm of recession and a narrow, thin zone of attached gingiva. This site will be treated by a minimally invasive grafting technique.



## BLUNT DISSECTION

Instrument: Micro Elevator

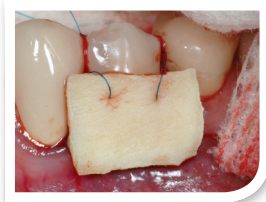
A full thickness mucoperiosteal pouch is raised by blunt subperiosteal dissection using a Allen Periosteal Elevator.



## ROOT PREPARATION

Instrument: Younger-Good 7/8 Curette

This curette is also used to plane the exposed root, removing any deposits and smoothing the surface.



## GRAFT PLACEMENT

6-0 Polypropylene Suture

The Alloderm graft is inserted into the pouch using the Younger-Good 7/8 curette. The graft may be sutured before or after insertion with 6-0 Polypropylene.



## SUTURE REMOVAL

At four weeks post-surgery, the surface suture is removed. The graft suture is removed at three months post-surgery. The suture removal is facilitated by use of the Allen/Johnston Suture Removal Kit.



## INITIAL INCISION

Instrument: Allen End-Cutting Intrasulcular Knife

The initial incision is made within the sulcus to sever the attachment from the base of the sulcus to the osseous crest with the KPA.



## PAPILLA ELEVATION

Instrument: Younger-Good 7/8 Curette

This curette is used as a curved elevator to separate the papilla from the interdental osseous crest.



## SHARP DISSECTION

Instrument: Allen Modified Orban Knife

The pouch is extended and mobilized by sharp supraperiosteal dissection apically and laterally with the Allen Modified Orban Knife.



## 6-0 SUTURING

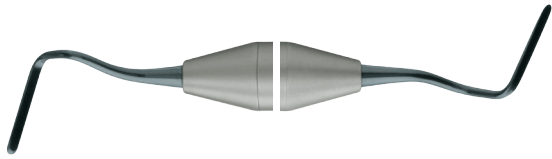
6-0 Polypropylene Suture

Using 6-0 Polypropylene suture and a Micro Castro needle holder, coronally advance the pouch to completely cover the graft and secure with an interrupted sling suture.



## SIX MONTHS AFTER GRAFTING

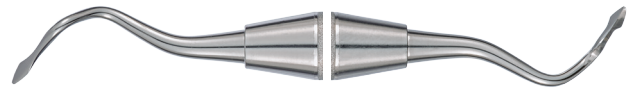
Complete root coverage and increased dimensions of attached gingiva have been achieved.



**Allen End-Cutting Intrasulcular Knife, Black Line**

| KPAX

Used for the initial intrasulcular incisions. The thin narrow blade with dull sides provides for incisions from the base of the sulcus to the alveolar crest without harming the sulcular walls.



**Allen Arrowhead Knife, EverEdge®**

| KO12KP3R49

The new Allen Arrowhead Knife is indicated to initiate the sharp dissection with less risk of cutting the sulcular margin and to reach undercuts while maintaining contact with bony surface irregularities where the longer blade of the Modified Orban Knife would be more likely to span.



**Allen Periosteal Elevator, Anterior, Black Line**

| PPAELAX

Used for blunt reflection of the tissue in pouch and tunneling procedures in the anterior region or where the tissue is very thin. One-third narrower than the PPAEL.



**Allen Modified Orban Knife, EverEdge**

| KO12KP03R9

Used for sharp dissection in pouch and tunnel procedures. The cutting edge ends 5mm from the shank allowing for lateral dissection without harming sulcular margin. The flat side of the instrument enables close approximation to the periosteum for immediate supra-periosteal dissection.



**7/8 Younger-Good Curette, EverEdge**

| SYG7/89 (2)

Curette used for root preparation. The curvature of the curette is also ideal for elevation of the papilla from the interproximal osseous crests in tunneling procedures.



**Allen Periosteal Elevator, Posterior, Black Line**

| PPAELPX

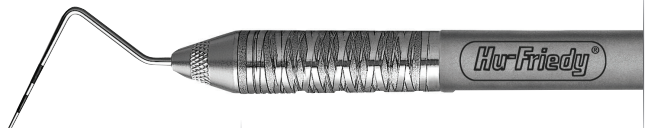
Used for blunt dissection in the tunnel technique. The angle of the shank provides improved access for posterior interradicular dissection.



**Allen Periosteal Elevator, Black Line**

| PPAELX

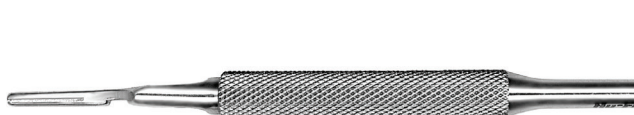
Used for blunt tissue reflection in pouch and tunneling procedures. The three-sided instrument (the curved end may be used with the curve down or up) enables sub-periosteal elevation of bound-down tissue reducing the risk for perforation.



**CP-11 Color Coded Periodontal Probe**

| PCP116

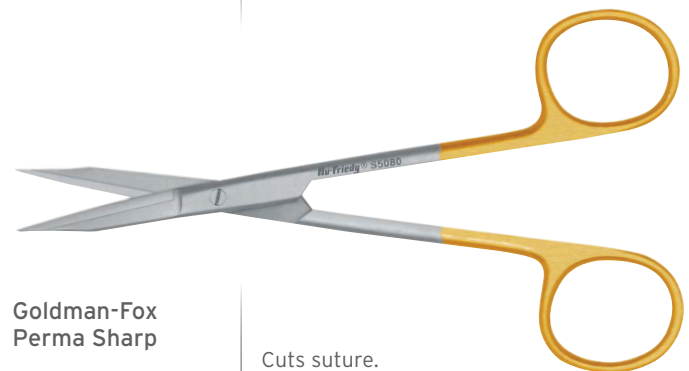
Periodontal probe with markings at 3-6-8-11mm in #6 Satin Steel handle.



**#5 Straight Scalpel Handle, Round**

| 10-130-05

Round handle allows for precise fingertip control of scalpel blade.



**Goldman-Fox Perma Sharp Straight Scissors**

| S5080

Cuts suture.



**Corn Suture Pliers**  
| SP20

Allows for better visibility of tissue margins for exact suture placement.



**Micro Straight Castro Needle Holder, Diamond Dusted**  
| NHM-5026R

Narrow beaks hold 6-0 and 7-0 sutures, diamond dusting grips without scarring the needle, round handle allows for fingertip control. Should not be used on suture larger than 6-0.



**Precision Dressing Forceps, Diamond Dusted**  
| 8-905DD

Small diameter diamond dusted beaks allows the assistant to capture small diameter suture needles in embrasure spaces.



**#5 Front Surface Mouth Mirror**

**#6 Satin Steel Mirror Handle**

| MIR5 (2)  
| MH6 (2)

Mirror with large diameter ergonomic handle for cheek and tongue retraction.

**Allen Membrane Measurement Card**  
| ALLENCARD



The Allen Membrane Measurement Card is used as a sturdy, sterilizable surface to measure and trim membrane material.

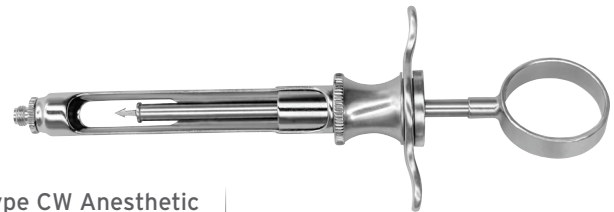
**16 Instrument Infinity Series Cassette**  
**Hinged Instrument Clips**

| IMN416X  
| IM1002 (2)

16 instrument IMS cassette to organize instruments with clips to hold scissors in lid of cassette.



**Type CW Anesthetic Aspirating Syringe, Winged**  
| SYRCW



Used for the delivery of local anesthetics.

**6-0 Blue Polypropylene 18" C-17**  
**3/8 Circle Reverse Cut**  
| PSN8384P



This suture is used to secure the graft over the root within the pouch.

## ALLEN/JOHNSTON SUTURE REMOVAL KIT

This kit was specifically designed for removing sutures placed during periodontal plastic surgery procedures, when microsurgical techniques are utilized.

AJSRKIT

THE ALLEN/JOHNSTON SUTURE REMOVAL KIT INCLUDES:

| PART CODE | DESCRIPTION                                   |
|-----------|-----------------------------------------------|
| IMN5056E2 | IMS Infinity Series™ Cassette                 |
| EXD56     | #5 Explorer, #6 Satin Steel® Handle           |
| S31       | Castroviejo Scissors                          |
| EXD66     | #6 Explorer, #6 Satin Steel Handle            |
| DPU17     | Utility Pick-Up Dressing Pliers               |
| NHM-5027  | Micro Curved Smooth Castroviejo Needle Holder |



(Signature Series Cassette shown)

Call 1-800-Hu-Friedy or visit [Hu-Friedy.com](http://Hu-Friedy.com) for more information.

©2016 Hu-Friedy Mfg. Co., LLC. All rights reserved. HF-5685/1016

