



HU-FRIEDY KEY OPINION LEADER

IMPLANT/BONE AND SOFT TISSUE SURGERY KIT



General Perma Sharp® Tissue Pliers
| **TP5070**

Plier with no teeth to hold a flap or biomaterial.



DeBaKey Perma Sharp® Tissue Pliers
| **TP5090**

Atraumatic surgical tissue plier with micro teeth to hold flap margin.



Trepine Contra Angle Bur, 6mm
| **TRE060M**

Round, hollow, serrated burs for extracting bone, marked in 2mm increments, titanium coated, adapts to contra angle handpiece.



#15 Sterile Blades, Box of 100
| **10-255-15**

Sterile, Box of 100, Surgical Carbon Steel



#15C Sterile Blades, Box of 100
| **10-256-15**

Sterile, Box of 100, Surgical Carbon Steel



67 Mini Scalpel Blade, Box of 12
| **MB67**

12 pieces/box



69 Mini Scalpel Blade, Box of 12
| **MB69**

12 pieces/box



UNC Color Coded Periodontal Probe, #6 Handle
| **PCPUNC156**

Universal probe with 1mm increments.



Microsurgical Scalpel Handle
| **SHDPV**

Fits micro scalpel blades.



#5 Straight Scalpel Handle, Round
| **10-130-05**

Finely balanced, penlike handle that easily rotates and maneuvers in difficult to reach areas.



#6 Satin Steel® Mirror Handle
| **MH6**



#4 and #5 Front Surface Mouth Mirrors
| **MIR4, MIR5**

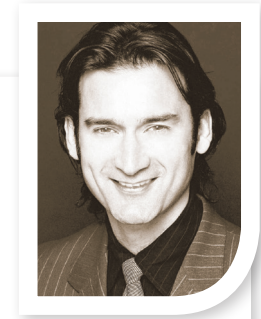
Mirror with large diameter ergonomic handle for cheek and tongue retraction.



20 Instrument Oral Surgery Signature Series® Cassette, Orange
| **IMOS3**

Large Cassette for 20 instruments plus additional space for accessories. Dimensions: 8" x 14.5" x 1.25". Other rail colors available:

- | | | | |
|--------|-------|--------|-------|
| Red | IMOS0 | Purple | IMOS6 |
| Gray | IMOS1 | Blue | IMOS8 |
| White | IMOS2 | Green | IMOS9 |
| Yellow | IMOS5 | | |



Sascha A. Jovanovic was formally trained in Periodontics at UCLA School of Dentistry, in Implant Dentistry at Loma Linda University and in Prosthodontics at University of Aachen, Germany and holds a Master of Sciences degree in Oral Biology from UCLA.

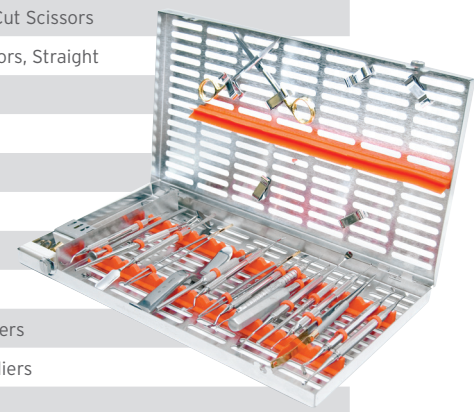
He specializes in dental implant therapy, bone & soft tissue reconstruction, is a lecturer at UCLA Continuing Dental Education and is director and founder of the web based gIDE Institute at www.gidedental.com.

Dr. Jovanovic is the past-president of the European Association for Osseointegration (EAO), a past-board member of the Osseointegration Foundation (OF), and was the program chair of the EAO 2000 annual scientific congress. He lectures extensively worldwide and has published over 60 articles and book chapters, and one textbook titled Color Atlas of Implantology (Thieme Publ.). He is on several editorial boards for scientific journals and has published a DVD-educational series titled 'Advanced Implant Therapy'.

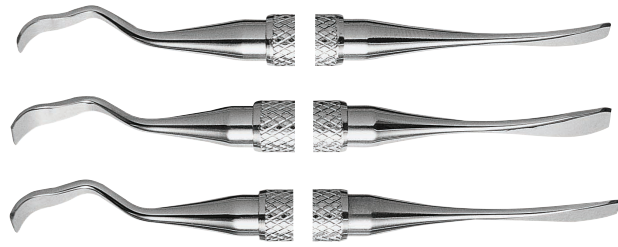
DR. SASCHA A. JOVANOVIC, D.D.S., M.S.

THE IMPLANT/BONE AND SOFT TISSUE SURGERY KIT INCLUDES:

PART CODE	DESCRIPTION
10-130-05	#5 Straight Scalpel Handle, Round
10-255-15	#15 Sterile Blades, Box of 100
10-256-15	#15C Sterile Blades, Box of 100
PJO/1	Jovanovic Periodontal Chisel, 1mm/4mm
PJO/2	Jovanovic Periodontal Chisel, 2mm/5mm
PJO/3	Jovanovic Periodontal Chisel, 3mm/6mm
PLGJO/4	Jovanovic Bone Plugger
BSJO5	Jovanovic Bone Scoop
CL866	#86 Lucas Surgical Curette, #6 Handle
CM2	#2 Molt Curette
CRMS	Simion Cheek Retractor
H4	#4 Straight Mosquito Hemostat
IMPJO6	Jovanovic Sinus Lift Instrument, #6 Handle
MAL1	#1 Mead Immunity Mallet
MH6	#6 Satin Steel® Mirror Handle
MIR4	#4 Front Surface Mouth Mirror
MIR5	#5 Front Surface Mouth Mirror
MB67	67 Mini Scalpel Blade, Box of 12
MB69	69 Mini Scalpel Blade, Box of 12
NH5024R	Castroviejo Perma Sharp® Needle Holder, Round
PCPUNC156	UNC Color-Coded Periodontal Probe, #6 Handle
PESIM1	Simion Sinus Lift Instrument
PPR3S	PR-3 Prichard Periosteal, Short Handle
RBOE	Boehler Double-Action Rongeurs
S14SC	LaGrange Perma Sharp® Super-Cut Scissors
S5080	Goldman-Fox Perma Sharp Scissors, Straight
SG5/6R9	5/6 Gracey Rigid, EverEdge®
SG7/8R9	7/8 Gracey Rigid, EverEdge®
SG11/12R9	11/12 Gracey Rigid, EverEdge®
SG13/14R9	13/14 Gracey Rigid, EverEdge®
SHDPV	Microsurgical Scalpel Handle
SKRA3	KRA-3 Kramer Surgical Curette
TP5070	General Perma Sharp® Tissue Pliers
TP5090	DeBaKey Perma Sharp® Tissue Pliers
TRE060M	Trepine Contra Angle Bur, 6mm
IMOS3	20 Instrument Oral Surgery Signature Series® Cassette, Orange



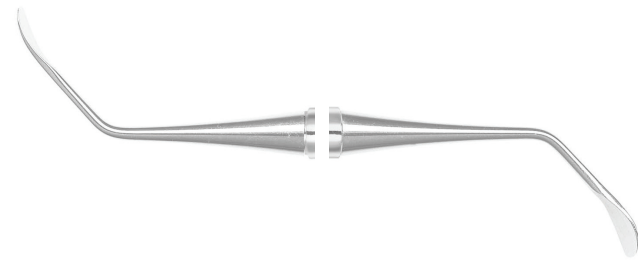
IMPLANT/BONE AND SOFT TISSUE SURGERY KIT



Jovanovic Periodontal Chisel

| PJO/1 (4 MM)
| PJO/2 (5 MM)
| PJO/3 (6 MM)

These double-ended instruments feature straight and curved mono-beveled chisels designed to elevate the periosteum, clean the bone and root surfaces and sculpt the bone.



Jovanovic Sinus Lift Instrument, #6 Handle

| IMPJ06

The third instrument to elevate the sinus lining.



KRA-3 Surgical Curette

| SKRA3

The first instrument to elevate the sinus lining.



5/6 Gracey Rigid, EverEdge®

| SG5/6R9

Medium contra-angle for anteriors and premolars.



PR-3 Prichard Periosteal, Short Handle

| PPR3S

May be used as a mirror as well as for tissue retraction.



7/8 Gracey Rigid, EverEdge®

| SG7/8R9

Medium contra-angle for premolars, molars, facial and lingual surfaces.



#86 Lucas Surgical Curette

| CL866

Surgical curette to clean and prepare a bone surface.



11/12 Gracey Rigid, EverEdge®

| SG11/12R9

Angulated to reach mesial surfaces of posterior teeth.



Jovanovic Bone Plugger

| PLGJO/4

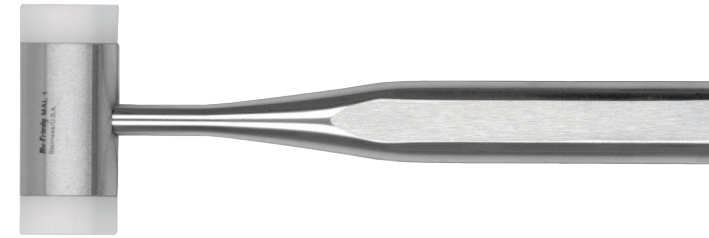
Double-ended instrument will condense a bone graft into a defect or sinus cavity.



13/14 Gracey Rigid, EverEdge®

| SG13/14R9

Angulated to reach distal surfaces of posterior teeth.



#1 Mead Immunity Mallet

| MAL1



Simion Cheek Retractor

| CRMS (QTY. 2)

Universal flap retractor.



Jovanovic Bone Scoop

| BSJ05

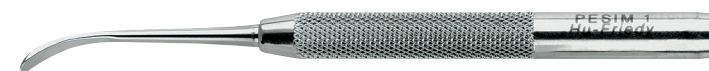
Harvests cancellous bone.



#2 Molt Surgical Curette

| CM2

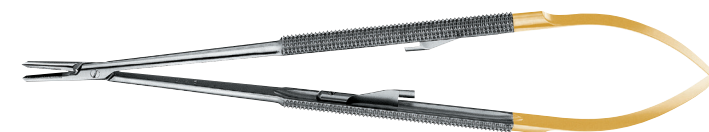
Remove small pieces of tissue, bone or roots.



Simion Sinus Lift Instrument

| PESIM1

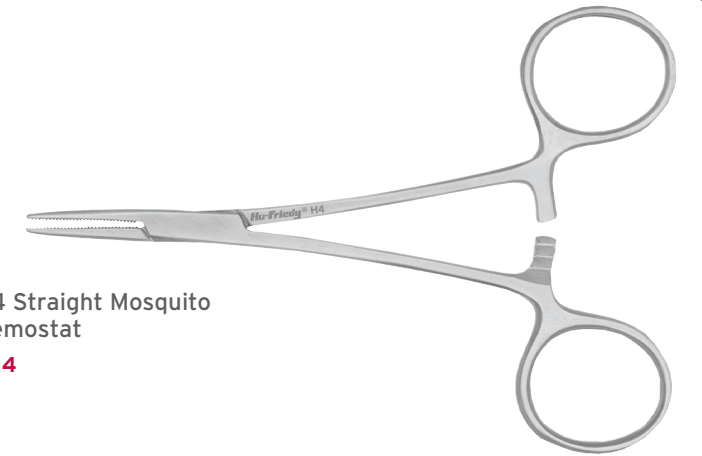
The second instrument to elevate the sinus lining.



Castroviejo Perma Sharp® Needle Holder, Round

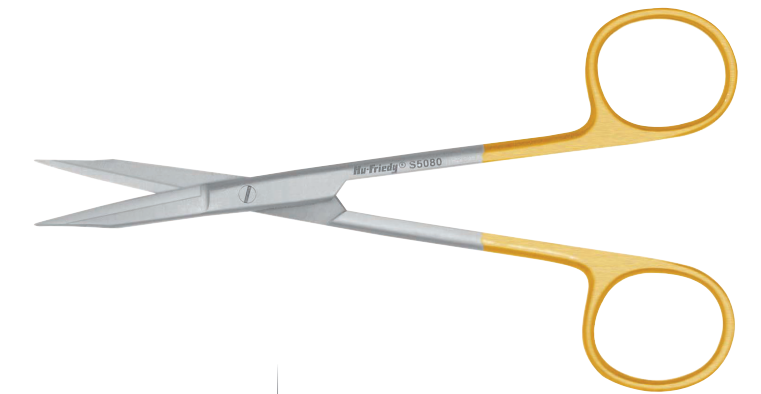
| NH5024R

Narrow beaks hold 5-0 and 6-0 sutures, diamond dusting grips without scarring the needle, round handle allows for fingertip control. Should not be used on suture larger than 6-0.



#4 Straight Mosquito Hemostat

| H4



Goldman-Fox Perma Sharp® Scissors, Straight

| S5080

Perfect for cutting sutures and membranes (1 blade serrated). Tapered beaks for interproximal use.



LaGrange Perma Sharp® Super-Cut Scissors

| S14SC

Perfect for cutting sutures, soft tissue and membranes.



Boehler Double-Action Rongeurs

| RBOE

Used to harvest bone from an edentulous ridge.