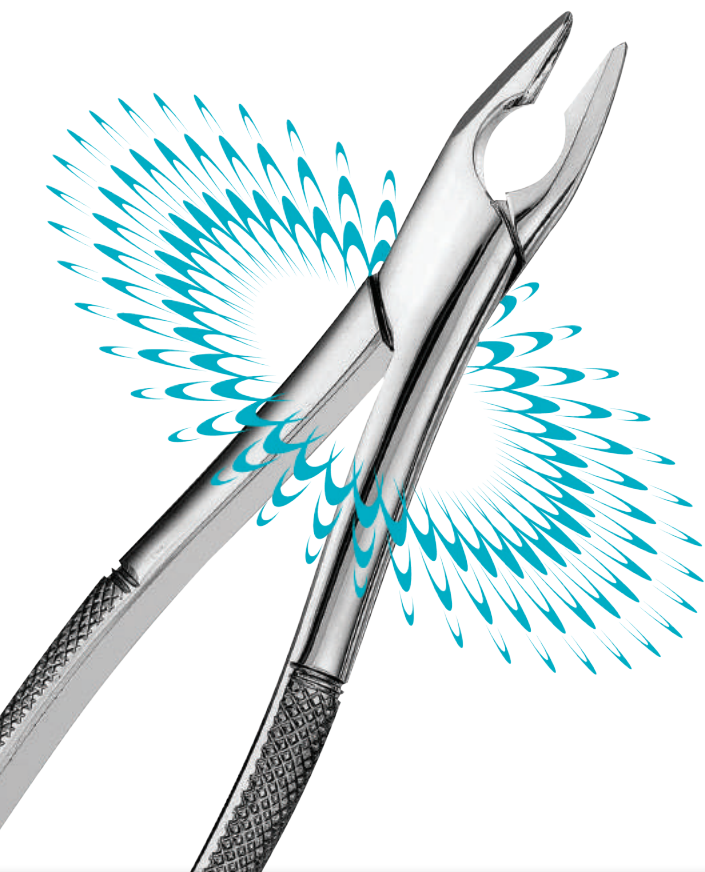


# APICAL FORCEPS

FOR ATRAUMATIC TOOTH EXTRACTIONS



## FACT

Clinicians require forceps that are reliable and provide optimal engagement of the root to securely extract a tooth.

## CHALLENGE

Forceps that do not provide optimal contact with the root can increase chances of crushing the crown or fracturing the buccal plate.

## SOLUTION

Hu-Friedy's thin, sharp and tapered Apical Forceps penetrate the PDL space, and provide multiple points of contact on the root of the tooth. Clinicians are therefore able to preserve the bone and reduce the risk of root and buccal plate fractures, enhancing the clinical outcome.

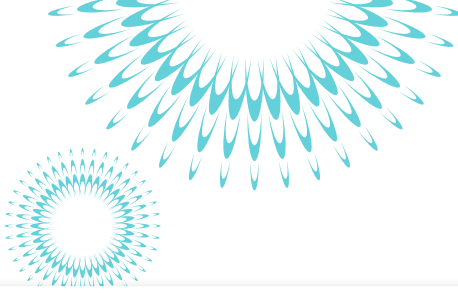
## POINTS OF PERFORMANCE

- **Firm, secure grasp of the crown and root** with thin, sharp, tapered beaks that penetrate the PDL space and allow for apical progression
- **Reduces the risk of crushing or fracturing the crown** with parallel beak design that provides multiple points of root contact
- **Enhanced clinical outcomes** with longitudinal beak serrations, providing additional grip to the crown and root surface
- **Longevity and corrosion resistance** afforded by hand-crafting from the finest grade surgical stainless steel
- **Reliable performance guaranteed** through uncompromising quality

FOR A FULL LINE OF ATRAUMATIC EXTRACTION INSTRUMENTS, PLEASE CONTACT HU-FRIEDY OR YOUR DEALER REPRESENTATIVE.

How the best perform

**Hu-Friedy**



## APICAL FORCEPS

### PRESIDENTIAL® FORCEPS SERIES

Indicated by the ★

#### LIFETIME GUARANTEE

*Hu-Friedy Presidential Apical Forceps are superbly constructed from forged surgical stainless steel, meticulously crafted and finished with a precision hinge. They also carry a lifetime warranty against defects in material and workmanship.*

#### MADE IN THE U.S.A.

*Hu-Friedy proudly handcrafts all Presidential Apical Forceps in the U.S.A.*

#### UPPER ANTERIORS ★

A universal forceps with parallel beaks for use on upper centrals, laterals and bicuspid.



#### UPPER UNIVERSAL ★

A universal upper forceps for use on centrals, laterals and bicuspid.



#### LOWER UNIVERSAL ★

A universal lower forceps for use on centrals, laterals and bicuspid.



#### LOWER ANTERIORS

A universal lower anterior forceps for use on centrals, laterals, cuspids and bicuspid.



#### LOWER MOLARS ★

A universal forceps for use on lower third molars.



#### UPPER MOLARS

A universal forceps for use on upper third molars.



Visit us online at [Hu-Friedy.com](http://Hu-Friedy.com)

©2012 Hu-Friedy Mfg. Co., LLC. All rights reserved. HF-256/0312

**Hu-Friedy**