

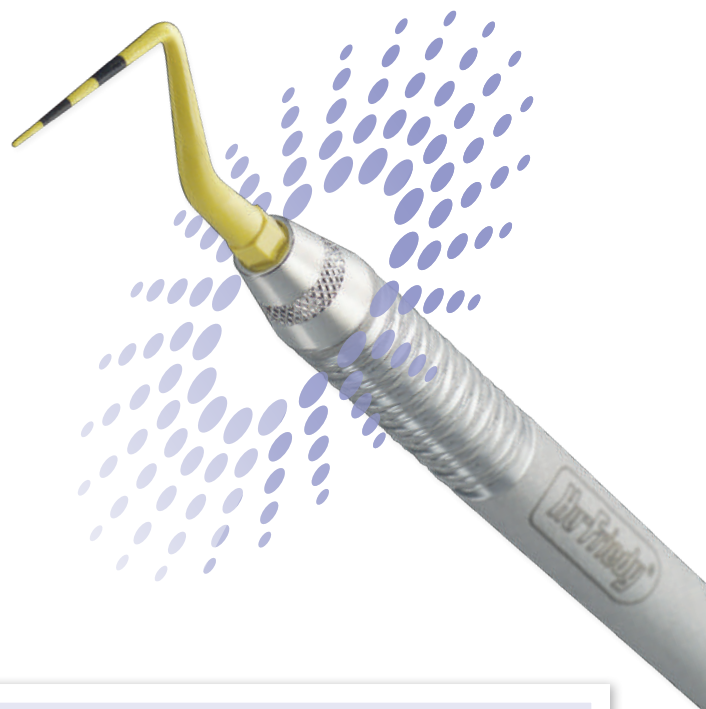


# HU-FRIEDY COLORVUE® PROBES

See the difference

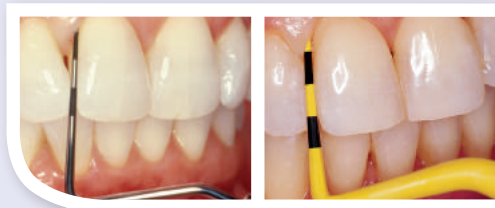
## POINTS OF PERFORMANCE

- Vivid yellow tip & black markings provide increased intraoral visibility for faster and more accurate assessments
- Flexible, rounded tip ensures greater patient comfort and acceptability
- Large diameter, ergonomic handle can be reused or recycled
- Safe for use around implants



## STOP SQUINTING TO READ POCKET DEPTHS

**1** Compare the Colorvue probe to a standard metal probe. Colorvue's yellow tip with black markings provides superior contrast to the gingival tissue when measuring pocket depth.



**2** 5 mm of recession is easily assessed as a result of the excellent contrast between the Colorvue probe and exposed root surface. In addition, the Colorvue probe enhances measurement of periodontal attachment loss.



Photos courtesy of Dr. James Pavlatos

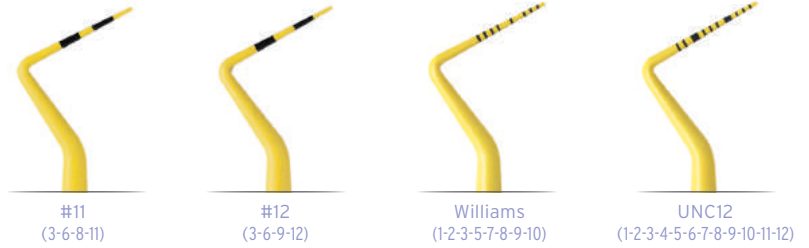
How the best perform

**Hu-Friedy**

## TIP DESIGNS

Colorvue tips are available in four popular tip designs. Markings will wear with normal use; simply dispose of the tip. Replacement tips are available in packs of 12. Tips last approximately 30 uses.

**COLORVUE PROBES** feature the lightweight ergonomically-designed Satin Steel® handle for the balance, control and comfort you prefer.



Colorvue Probe Handle | PH6

## EXPRO DESIGNS

Available for clinicians who prefer the convenience of a probe and explorer combination. The Colorvue Probe is available in three popular expro designs.



Colorvue Expro Handle | XPTU17/PH6

## PART CODES & DESCRIPTIONS

### INTRO KITS

PCVPROM011	Colorvue Probe #11, Markings 3-6-8-11; 1 tip and 1 handle
PCVPROM0	Colorvue Probe #12, Markings 3-6-9-12; 1 tip and 1 handle
PCVPROMOWM	Colorvue Probe, Williams Markings 1-2-3-5-7-8-9-10; 1 tip and 1 handle
PCVPROMONC	Colorvue Probe, UNC12 Markings 1-2-3-4-5-6-7-8-9-10-11-12; 1 tip and 1 handle

### 12 PACKS

PCV12KIT12	Colorvue Probe #12, Markings 3-6-9-12; 12 tips and 2 handles
PCV11KIT12	Colorvue Probe #11, Markings 3-6-8-11; 12 tips and 2 handles
PCVNCKIT12	Colorvue Probe, UNC12 Markings 1-2-3-4-5-6-7-8-9-10-11-12; 12 tips and 2 handles

### 6 PACKS

PCV12KIT6	Colorvue Probe #12, Markings 3-6-9-12; 7 tips and 1 handle
PCV11KIT6	Colorvue Probe #11, Markings 3-6-8-11; 7 tips and 1 handle
PCVWKIT6	Colorvue Probe, Williams Markings 1-2-3-5-7-8-9-10; 7 tips and 1 handle
PCVNCKIT6	Colorvue Probe, UNC12 Markings 1-2-3-4-5-6-7-8-9-10-11-12; 7 tips and 1 handle

### REPLACEMENT TIPS

PCV12PT	Colorvue Probe #12, Markings 3-6-9-12; 12 tips
PCV11PT	Colorvue Probe #11, Markings 3-6-8-11; 12 tips
PCVWPT	Colorvue Probe, Williams Markings 1-2-3-5-7-8-9-10; 12 tips
PCVUNC12PT	Colorvue Probe, UNC12 Markings 1-2-3-4-5-6-7-8-9-10-11-12; 12 tips

### HANDLES

PH6	Colorvue Probe Satin Steel® Handle
XP23/PH6	#23 Colorvue Expro Handle*
XPTU17/PH6	#TU17 Colorvue Expro Handle*
XP17/PH6	#17 Colorvue Expro Handle*

Visit us online at [Hu-Friedy.com](http://Hu-Friedy.com)

Call 1-800-Hu-Friedy or contact your authorized Hu-Friedy representative for more information.  
©2012 Hu-Friedy Mfg. Co., LLC. All rights reserved. \*Colorvue tips sold separately. HF-242/0512

