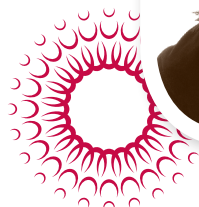




HU-FRIEDY KEY OPINION LEADER

ANDREA COOK ORTHODONTIC
PROCEDURAL KIT RECOMMENDATIONS



Andrea Cook's in-office, hands on training motivates and energizes orthodontic clinical teams. She bases training systems on practical knowledge gained through 20 years chairside experience. She works as a clinical consultant and trainer for premier orthodontic offices across the country.

Since effectively training clinical team members is a critical portion to the advancement of clinical productivity and profitability Andrea works with teams to increase efficiency, improve communication and guides the office to a new level of excellence.

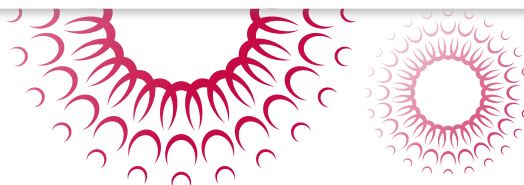
Her years of experience include working in single, double, and multi doctor practices. She has extensive experience as clinical coordinator for a multi doctor practice seeing over 120 patients per day. Andrea's experience allows her to understand and address the concerns of the clinical team.

Hu-Friedy Orthodontics offers a superior quality instrument that stays looking newer longer for a better patient perception. In addition, our instruments offer a longer product life, so you are able to reduce your costs on instrument replacements.



Hu-Friedy IMS® Instrument Management System

By standardizing your instruments with IMS, additional time and revenue is generated while extending the useful life of your Hu-Friedy Orthodontic instruments. Orthodontic professionals state that by implementing IMS, they save 5 to 10 minutes per procedure allowing the staff to spend more time on value-added activities.

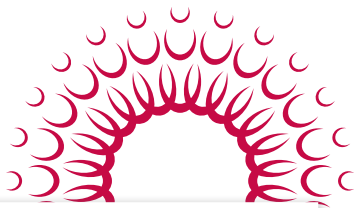


ANDREA CAN HELP YOU WITH:

- Determining procedural set ups
- Sterilization design and implementation

How the best perform





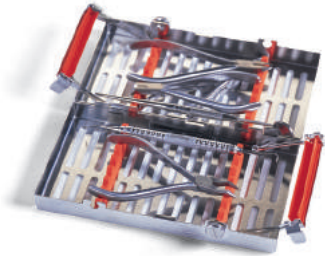
Procedure Set Ups

Below is an example of the basic procedural setups most orthodontic offices use. These are personalized to each practice by the type of bracket system used, specific bonding procedures, as well as the clinician's preferences. The number of each set up will be determined by a calculation of patients and procedures in your schedule template and throughput time of each cassette. The number and type of instruments needed will be developed by an instrument audit and input from the clinician. Specific equipment recommendations will be based on cassette selection, number of cassettes and throughput time.

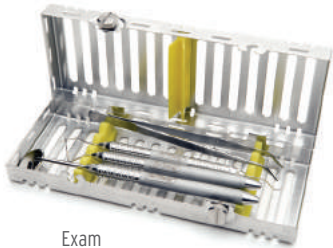
EXAMPLE CASSETTES



Archwire/Adjustment
Bonding
Banding
Debanding



Retainer



Exam

Implementation of the cassette instrument processing system is an important component of your practice's compliance with CDC guidelines and demonstrates to your patients your commitment to providing the highest quality patient care. Cassettes can increase clinical efficiency and maintain instrument quality as well. Please call for a smooth and seamless integration of these procedures into your busy practice.



Archwire/Adjustment

Mirror	MIR5 MH6
Scaler	SH6/76
Cotton pliers	DPU17
Mathieu/Hemostat	678-330
Weingart	678-201L
Ligature cutter	678-107L
Distal end cutter	678-101L
Bird beak (optional)	678-304
Tweed (optional)	678-306

Banding

Mirror	MIR5 MH6
Scaler	SH6/76
Cotton pliers	DPU17
Mathieu/Hemostat	678-330
Weingart	678-201L
Ligature cutter	678-107L
Distal end cutter	678-101L
Bracket holder - Anterior	678-212
Bracket holder - Posterior	678-212
Bracket gauge	N/A

Exam

Mirror	MIR5 MH6
Explorer	EXD36
Ruler (metal)	CLR6

Banding

Mirror	MIR5 MH6
Scaler	SH6/76
Cotton pliers	DPU17
Mathieu/Hemostat	678-330
Weingart	678-201L
Ligature cutter	678-107L
Distal end cutter	678-101L
Band remover	678-207
Bite stick	N/A

Debanding

Mirror	MIR5 MH6
Scaler	SH6/76
Cotton pliers	DPU17
Weingart	678-201L
Ligature cutter	678-107L
Band remover	678-207
Bracket remover	678-219
Adhesive remover	678-206

Retainer Check

Mirror	MIR5 MH6
Scaler	SH6/76
Cotton pliers	DPU17
Bird beak	678-304
Three prong	678-302

Call Andrea at 253-332-3376 or visit AndreaCookConsulting.com

©2014 Hu-Friedy Mfg. Co. LLC. All rights reserved. Andrea is an independent consultant and not an employee or agent of Hu-Friedy. HF-225/0714

